

SPECIFICATIONS

Robex 16/22/36N/75-7

Description		Unit	ROBEX16-7	ROBEX22-7	ROBEX36N-7	ROBEX75-7	
MACHINE WEIGHT	CAB	Rubber shoe	kg(lb)	1,630(3,594)	2,200(4,850)	3,620(7,981)	7,430(16,380)
		Steel shoe	kg(lb)	1,680(3,704)	2,250(4,960)	3,700(8,157)	7,530(16,601)
	Canopy	Rubber shoe	kg(lb)	1,520(3,351)	2,080(4,586)	-	-
		Steel shoe	kg(lb)	1,570(3,461)	2,130(4,696)	-	-
STANDARD BUCKET	Capacity (SAE heaped)	m ³ (yd ³)	0.04(0.05)	0.06(0.08)	0.11(0.14)	0.25(0.33)	
	Width	mm(in)	400(15.7)	450(17.7)	590(23.2)	750(30)	
ENGINE	Maker, model	-	Mitsubishi L3E-W231	Mitsubishi L3E-W231	Mitsubishi S3L2-Y131NSB	Mitsubishi S4S	
	Rated power	hp(kW)/rpm	17.0/12.5/2,400	17.0/12.5/2,400	27.0/19.9/2,400	55.5/40.8/2,300	
	Displacement	cc(cu - in)	952(58)	952(58)	1,318(80)	3,331(203)	
WORKING RANGE	Arm length	mm(in)	1,100(43)	1,000(39)	1,285(51)	1,660(65)	
	Max. digging depth	mm(in)	2,350(93)	2,365(93)	3,130(123)	3,980(157)	
	Max. Vertical digging depth	mm(in)	1,705(67)	1,795(71)	2,185(86)	3,215(127)	
	Max. digging height	mm(in)	3,365(132)	3,745(147)	4,660(183)	6,510(256)	
	Max. dumping height	mm(in)	2,310(91)	2,510(99)	3,230(127)	4,535(179)	
	Max. digging reach	mm(in)	3,910(154)	4,065(160)	5,250(207)	6,660(262)	
	Min. swing radius	Front	mm(in)	1,630(64)	1,745(69)	2,325(92)	2,450(96)
		Swing	mm(in)	1,250(49)	1,405(55)	1,840(72)	1,925(76)
	Rear end radius	mm(in)	1,140(45)	1,255(49)	885(35)	1,570(62)	
	Boom swing angle	deg	Left80, Right50	Left80, Right50	Left75, Right55	Left80, Right50	
DIMENSION	Overall length	mm(in)	3,740(147)	4,075(160)	4,685(184)	6,255(246)	
	Overall width	mm(in)	1,020<1,300(40<51)	1,380(54)	1,700(67)	2,150(85)	
	Overall height	mm(in)	2,260(89)	2,250(89)	2,470(97)	2,555(101)	
	Dozer (width x height)	mm(in)	1,000<1,300 x 240(39<51 x 9)	1,380 x 280(54 x 11)	1,700 x 370(67 x 15)	2,150 x 510(85 x 20)	
PERFORMANCE	Travel speed	km/hr(mph)	2.1/3.9(1.3/2.4)	2.2/3.8(1.4/2.4)	2.5/4.5(1.6/2.8)	3.1/4.8(1.9/3.0)	
	Swing speed	rpm	11.5	11.5	8	9.7	
	Gradeability	deg(%)	25(47)	30(58)	30(58)	30(58)	
	Max. digging force	Bucket	kN/kgf/lbf	14.4/1,470/3,240	16.3/1,660/3,660	30.1/3,070/6,770	53.6/5,410/11,930
		Arm	kN/kgf/lbf	7.7/790/1,740	11.2/1,140/2,510	18.7/1,910/4,210	39.8/4,060/8,950
	Max. drawbar pull	kN/kgf/lbf	12.6/1,290/2,840	16.2/1,650/3,640	32.1/3,270/7,210	57.5/5,860/12,920	
UNDER-CARRIAGE	Ground pressure	CAB & rubber shoe	kpa(kgf/cm ²)<psi>	29.0(0.3)<4.3>	33.5(0.34)<4.8>	32.8(0.33)<4.7>	34.0(0.35)<5.0>
		Canopy & rubber shoe	<psi>	27.0(0.28)<4.0	31.7(0.32)<4.6>	-	-
	Tumbler distance x track gauge	mm(in)	1,130 x 1,020(44 x 40)	1,325 x 1,150(52 x 45)	1,640 x 1,400(65 x 55)	2,200 x 1,700(87 x 67)	
	Track shoe width	mm(in)	230(9)	230(9)	300(12)	450(18)	
Type of travelling motor	-	MAG-12V-110E	PHV-190-39-1-8003A	GM04VA	GM09-VN-C21/36-3		
Crawler tension system	-	Grease cylinder	Grease cylinder	Grease cylinder	Grease cylinder		
HYDRAULIC	Type of hydraulic pump	-	Gear x 3	Piston x 2 + Gear x 1	Piston x 2 + Gear x 1	Piston x 2 + Gear x 1	
	Pump oil flow	ℓ /min (US gpm)	3 x 15.7(3 x 4.1)	2 x 24.0 + 15.4(2 x 6.3 + 4.1)	2 x 42.0 + 25.2(2 x 11.1 + 6.7)	2 x 78.2 + 46.7(2 x 20.7 + 12.3)	
	Auxiliary circuit oil flow	ℓ /min (US gpm)	31.4(8.3)	48.0(12.7)	67.2(17.8)	78.2(20.7)	
	Relief valve setting pressure	Mpa(kgf/cm ²)<psi>	18.6(190)<2,700>	18.6/17.2(190/175)<2,700/2,490>	20.6/17.2(210/175)<2,990/2,490>	25.5/23.5(260/240)<3,700/3,410>	
CAPACITY	Hydraulic oil tank	ℓ /USgal/UKgal	24/6.3/5.3	33/8.7/7.3	42/11.1/9.2	85/22.5/18.7	
	Engine oil	ℓ /USgal/UKgal	3.5/0.9/0.8	3.5/0.9/0.8	4.5/1.2/1.0	7.5/2.0/1.6	
	Fuel tank	ℓ /USgal/UKgal	20/5.3/4.4	29/7.7/6.4	41/10.8/9.0	130/34.3/28.6	
	Cooling water	ℓ /USgal/UKgal	5.6/1.5/1.2	5.6/1.5/1.2	5.5/1.5/1.2	10/2.6/2.2	
NOISE	Noise level (Lwa/Lpa)	dB	93/84	93/82	94/79	98/78	

Robex HYUNDAI MINI & MIDI EXCAVATOR

16/22/36N/75-7



Standard and optional equipment may vary. Contact your Hyundai dealer for more information. The machine shown may vary according to International standards. All US measurement are rounded off to nearest pound or inch.

HYUNDAI
HEAVY INDUSTRIES CO., LTD.
CONSTRUCTION EQUIPMENT DIVISION

Head Office
(Sales Office) 1 CHEONHA-DONG, DONG-KU, ULSAN, KOREA
Tel: (82) (52) 230-7970, 7729 Fax: (82) (52) 230-7979, 7720

U.S. Operation Hyundai Construction Equipment U.S.A., Inc.
955 ESTES AVENUE, ELK GROVE VILLAGE IL, 60007
Tel: (1) 847-437-3333 Fax: (1) 847-437-3574

European Operation Hyundai Heavy Industries Europe N.V.
VOSSENDAAL 11, 2440 GEEL, BELGIUM
Tel: (32) 14-562200 Fax: (32) 14-593405 - 06

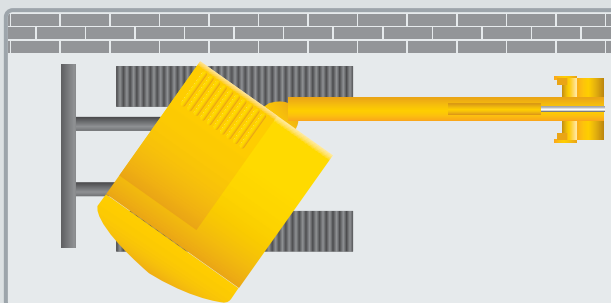
PLEASE CONTACT

www.hyundai-ce.com 2006. 04 Rev 0

■ Photo may include optional equipment.

Hyundai *Robex* 16/22/36N/75-7

This new series of the mini & midi excavators, provides a combination of proven power and unequaled working performance



Straight Travelling Circuit

Travelling straight can be provided when operate the other function. Wire triple pump hydraulic system and the arm regenerating circuit enables high efficiency and fine control at will.(R22/R36N/R75-7)



Cushion Cylinder Head

Reducing the shock at the stroke end and suppressing the uncomfortable shake.



Powerful Engine

Noise Level : Comply with EC Directive 2006
EPA Tier2 : Comply with engine emission regulation



Reinforced Rubber Track

Adoption of the reinforced rubber track which has outstanding endurance against the wear.



Quick Transportation the job Site

Technology in Cab Design Powerful & Dynamic Work !



Room Lamp

Consol Panel



Suspension Seat

Heater



Canopy Type

TOPS : Tip Over Protective Structure
FOGS : Falling Object Guard Structure



Full-open Type Engine Cover

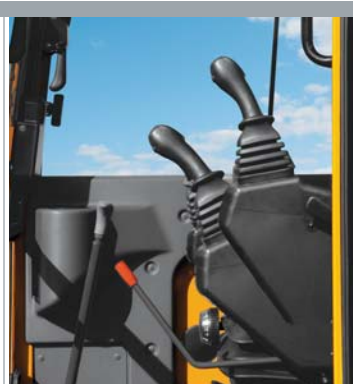
Convenient and Comfortable Space

Reliability and Serviceability



Wide, Comfortable Operating Space

Wide enough cabin and high quality suspension seat by absorbing digging shock prevent operator tiredness.

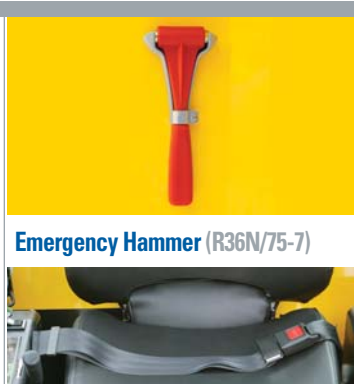


Safety Lock System

Safety system works if safety lock lever is released upwards.



Tempered Glass & Windscreen



Emergency Hammer (R36N/75-7)



Seat Belt

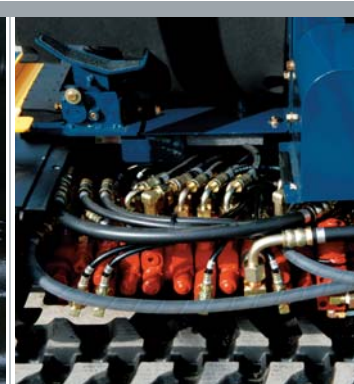


Hoses Built-in The Bracket

R16-7	1,140mm (3'9" ft-in)
R22-7	1,350mm (4'5" ft-in)
R75-7	1,410mm (4'8" ft-in)



Pressure Gauge Poet



Hose Layout

You can easily approach to the full-scale maintenance and repair.



Devided Style Dozer Hoses

Easy exchange of hose due to the unexpected damage.

■ Photo may include optional equipment.

Robex 36N-7 Zero tail

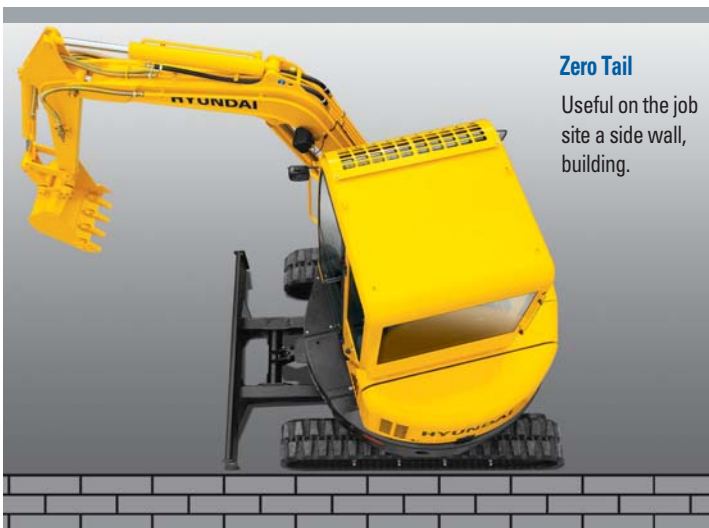
3.6 tons zero tail, Robex36N-7 has excellent performance in the narrow area.



Photo may include optional equipment.

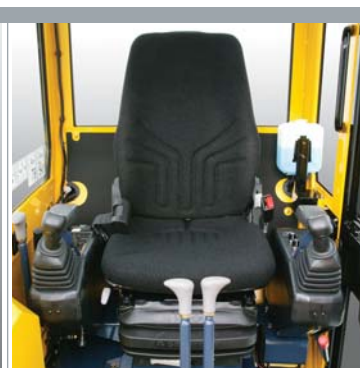
Performance and Durability

Reliability and Serviceability



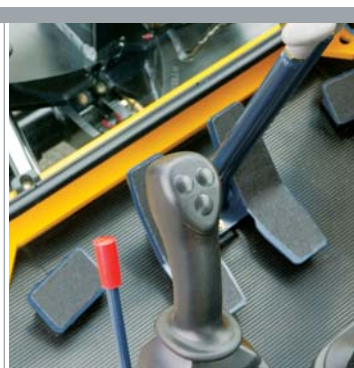
Zero Tail

Useful on the job site a side wall, building.



Wide, Comfortable Operating Space

Wide enough cabin and high quality suspension seat by absorbing digging shock prevent operator tiredness.



Sami Long Joystic & Smooth Pedals

Swing and PTO can be operated with joystic.

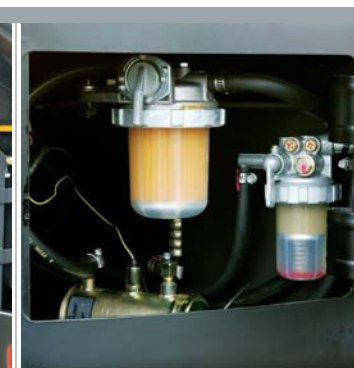


Step on the Side



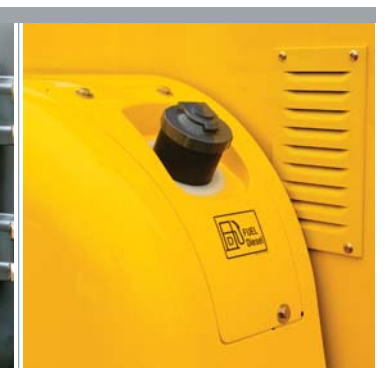
Centralized Engine and Fuel Piping

Good accessibility for the engine and fuel piping and equipment.



Easy-to-change Oil Filter

Filters gathered in one place enable operator to check them easily.



Fuel Tank

Cap with key, identical to ignition battery cover and cabin door.