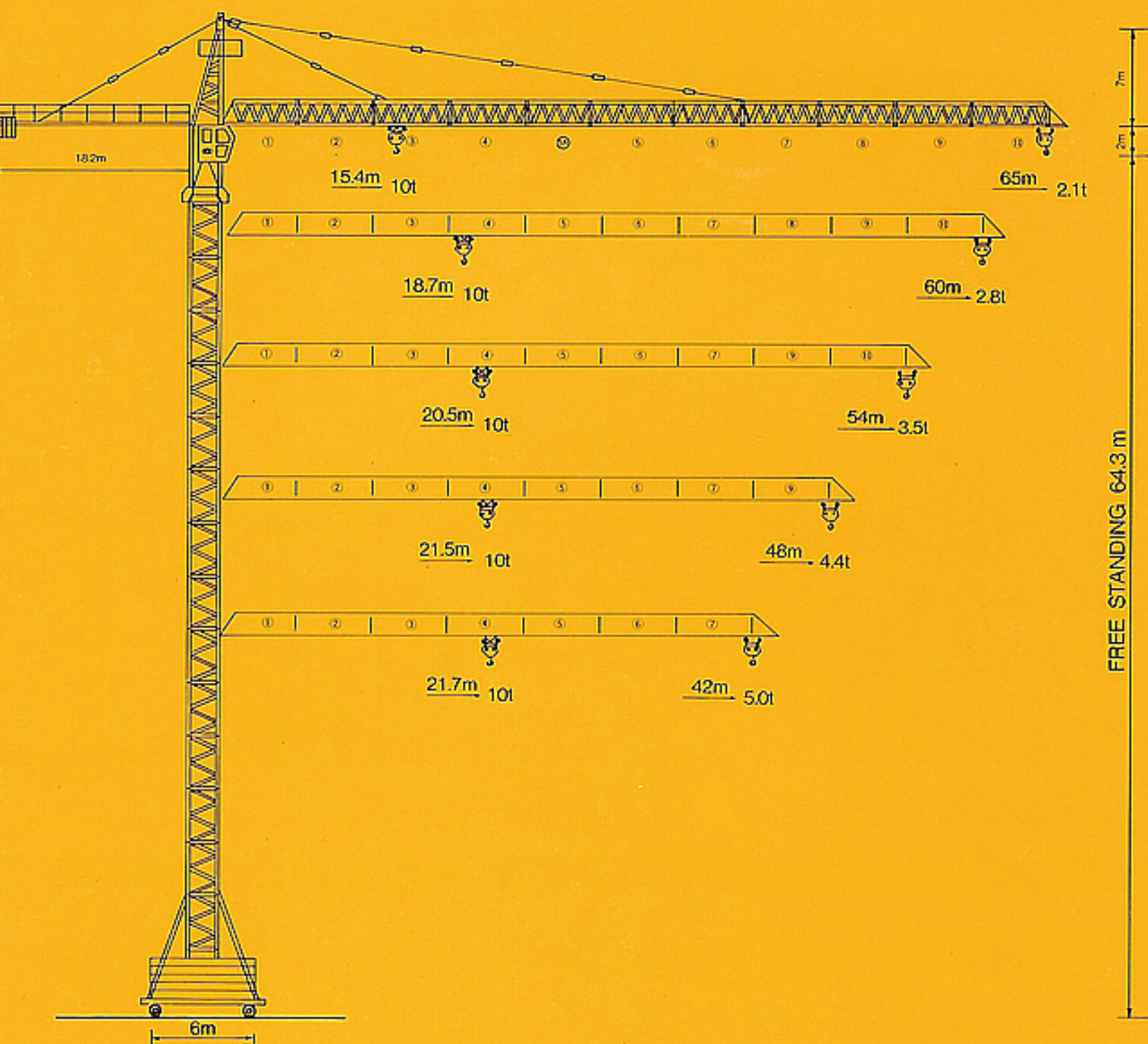




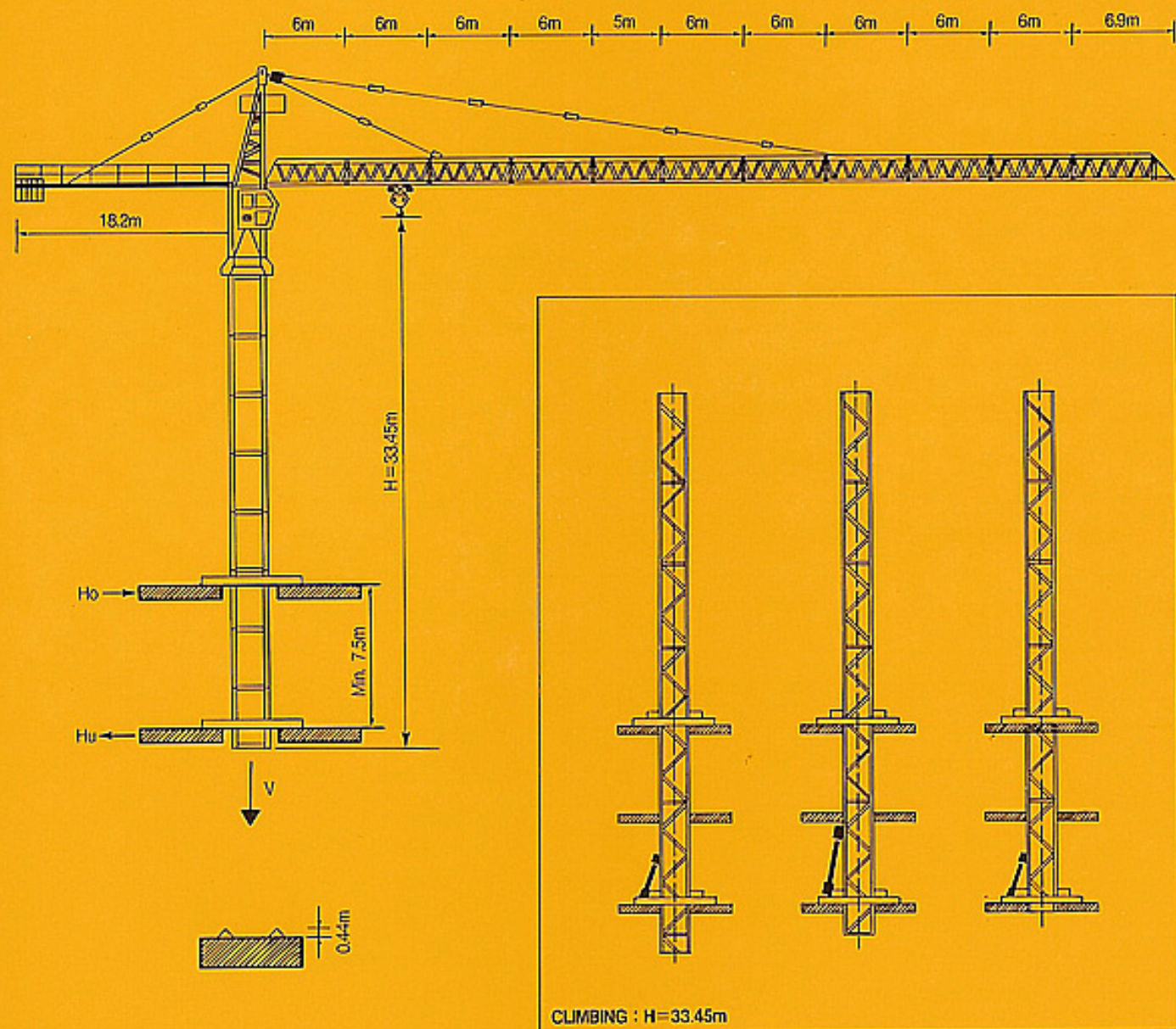
KUMKANG TOWER CRANE






KTC6510 GRUCOMEDIL




CASAGRANDE GROUP

CLIMBING



POWER SOURCE	WINCH TYPE	THREE PHASE CURRENT
47.5Kw	AWLR 405	380V-60Hz

Winch		m/min	t	Hp	Kw	
AWLR 405		0 - 29	5	40	29.5	430m max
		0 - 36	4			
		0 - 50	2.9			
		0 - 75	1.9			
		0 - 14.5	10			
		0 - 18	8			
		0 - 25	5.8			
		0 - 37.5	3.8			

TROLLEY		C3V	0-14-40-80m/min	5/4Kgm	7Kw
SLEWING		GVP	0.8 R.P.M	2 x 11kgm	2 x 5.5Kw
TRAVELLING		TR-TC	0-12-24m/min	4 x 5.4Kgm	4 x 4Kw

PACKING LIST

ITEM	QUANTITY	DESCRIPTION	LENGTH (M)	WIDTH (M)	HEIGHT (M)	UNIT WEIGHT(KG)	TOTAL WEIGHT(KG)
1	1	BASIC MAST 	7.5	2.28	2.28		3592
2	2	MAST(A) 	3.75	2.28	2.28	1760	3560
3	11	MAST(B) 	3.75	2.28	2.28	1710	18810
4	1	TELESCOPIC CAGE 	9.005	2.84	2.58		4477
5	1	SLEWING UNIT 	0.72	2.28	2.28		5670
6	1	CABIN MAST 	3.9	1.48	1.48		2410
7	1	CABIN 	2	1.2	1.643		300
8	1	TOWER HEAD 	6.785	1.48	1.35		2571
9	1	COUNTER-JIB(A) 	8.672	1.35	0.54		2040
10	1	COUNTER-JIB(B) 	8.472	1.35	0.54		2080
11	1	JIB SECTION(1) 	6	1.44	1.405		1155
12	8	JIB SECTION(2~9) 	6	1.44	1.405		6646
13	1	JIB SECTION(5A) 	5	1.44	1.405		635
14	1	JIB SECTION(10) 	6.09	1.44	1.405		557
15	1	JIB END 	1.405	0.45	1.44		100
16	1	TROLLEY 	5.1	1.619	1.8		627
17	1	HOIST WINCH 	1.59	1.545	1.33		1900